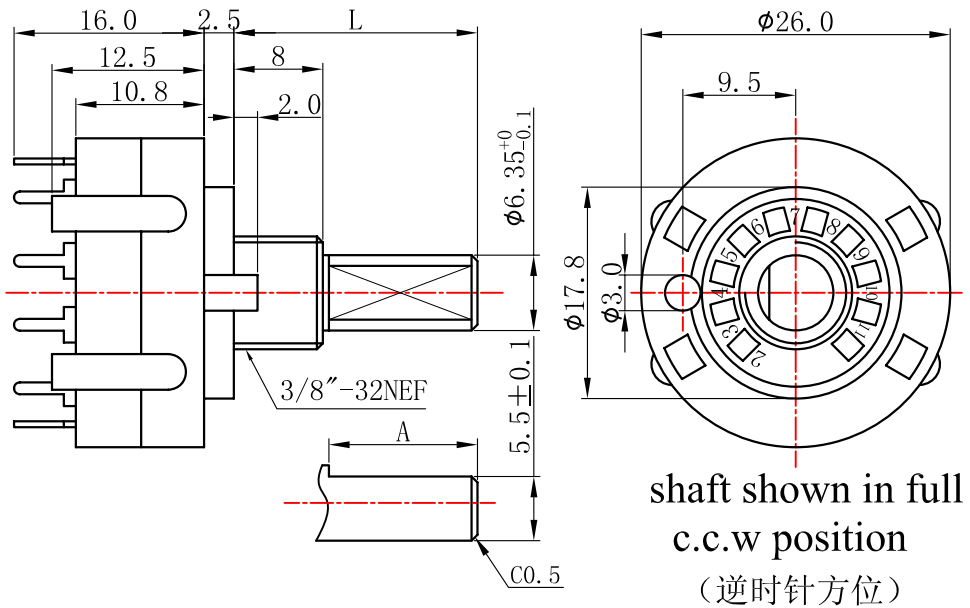
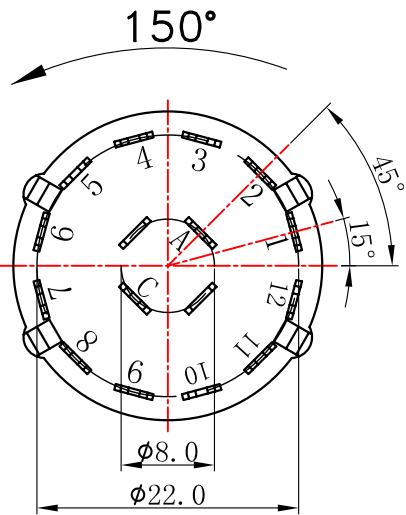
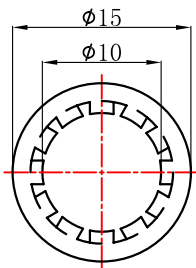


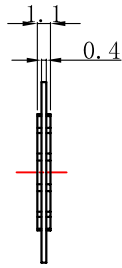
DIRECTION OF ROTATION



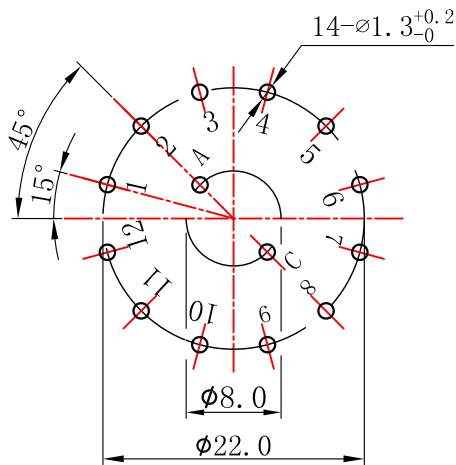
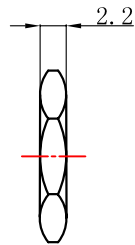
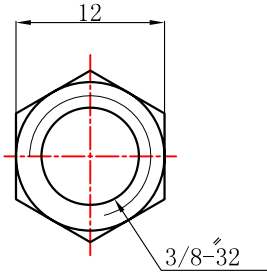
shaft shown in full
c.c.w position
(逆时针方位)



Washer 垫圈 (可选件)

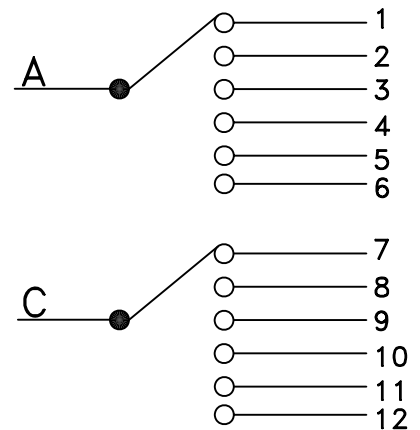


Nut 螺母 (可选件)



P.C.B. MOUNTING HOLE DETAIL

L	15	18	21	29	38
A	7	10	13	21	30



SWITCH CONTACT STATUS

01				04	
00	ORIGINAL DRAWING	13.04.15		03	
ISSU.	REVIAION	DATE		02	
			TOL.UTHERWISE SPEC	深圳明佳创新电子有限公司 型号 TYPE NO. S2601XC1206H1- \square FN \square P-000	
			BASIC DIMENSIONS		
DSGD.	CHKD.	APPD.	L ≤ 10	±0.3	图号 DRAWING NO. MJ-S2601-0010
			L > 10	±0.5	
	SCALE	X. XX:1	100 ≤ L	±0.8	
	UNIT	mm	ANGLE	±5°	

开关規格書
SWITCH SPECIFICATIONS

適用型號 : S2601XC1206H1					
APPLICABLE MODELS : S2601XC1206H1					
一 構造 CONSTRUCTION					
形狀,寸法,依照圖面規定					
外觀 各部應良好無銹蝕、裂痕、電鍍不良現象 APPEARANCE : EVRY PART SHOULD BE FINISHED NOT TO EXIST RUST FLAW CRACK AND PLATING					
二 通用規格 (Common specification)					
ITEM 項目		SPECIFICATIONS 規格			
回轉止動強度： Rotational stopper strength		8Kgf.cm MIN			
DETENT TORQUE: 脫出力		1±0.5Kgf.cm(1.0MINUTE)			
功率： Ratings		AC125V 0.3A			
接觸阻抗： Contact Resistance		DC 5V 1A 1KHz(2mv)以下測定 20MΩ			
絕緣抵抗： Insulation resistance		在 DC500V (1 分钟±5 秒) 条件下绝缘阻抗大于 100 mΩ			
耐電壓： Withstand Volatge		AC500V(50~60HZ) FOR 1 MINUTE			
旋轉力矩： Rotationl Torque		800~1500gf.cm			
電氣耐久性： Electrional Endurance		10,000cycles			
機械耐久性： Mechanical Endurance		10,000cycles			
儲存溫度： Storage Temperature Range		40°C±2°C			
使用溫度： Storage Temperature Range		-10°C~+60°C			
焊錫耐熱性： Resistance To Soldering Heat		WITHIN SOLDERING TEMPERATURE 260 °C NOT OVERE 3 SECONDS AND SOLDERING IS ONE TIME ONLY			
制定日期 RstabilhDate		CHKD 核准	CHKD 審核	DSG 制定	DOCUMENTNO 文號
版本號：A.0	變更記錄				S2601-0001