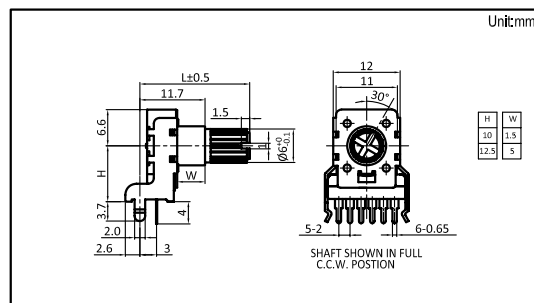
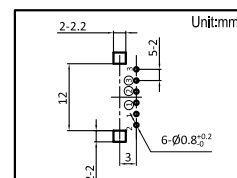


Part number	R11101GOAXV1		
Number of resistor elements	Dual -unit		
Mounting direction	Horizontal		
Shaft type	Optional		
Shaft length	Optional		
Center detent	<input type="checkbox"/> None <input type="checkbox"/> 1CC <input type="checkbox"/> 7CC <input type="checkbox"/> 41CC		
Total resistance	500Ω~1000KΩ		
Resistance taper	Optional		
Operating temperature range	-10℃~+70℃		
Electrical characteristics	Total resistance tolerance	<input type="checkbox"/> ±20% <input type="checkbox"/> 其它	
	Rated power	0.05W	
	Max. operating voltage	50V AC, 10V DC	
	Residual resistance	20Ω max	
	Sliding noise	less than 100mV	
	Gang error	-40~0dB ±3dB	
	Insulation resistance	100MΩmin, 250V DC	
	Voltage proof	300V AC for 1minute	
Mechanical characteristics	Total rotational angle	300°±5°	
	Rotational torque	5~45mN.m	
	Stopper strength	0.5N.m	
	Push-pull strength	80N max	
	Vibration	10 to 55 to 10Hz/min., amplitude is 1.5mm for all the frequencies, in X, Y and Z directions and for 2 hours respectively	
Durability	Operating life	15, 000 cycles	
MOQ	1000PCS		

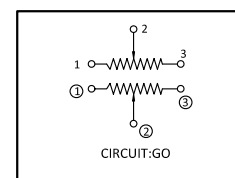
Dimensions



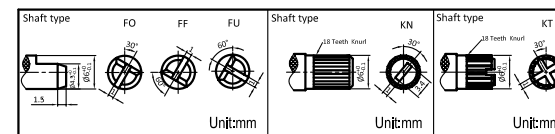
Mounting Hole Dimensions



Circuit Diagram



Shaft Options



Shaft Length Options

Unit:mm	Unit:mm	Unit:mm																																								
<table border="1"> <tr><td>L</td><td>12.5</td><td>15</td><td>17.5</td><td>20</td><td>22.5</td><td>25</td><td>27.5</td></tr> <tr><td>A</td><td>1</td><td>2</td><td>3</td><td>4</td><td>5</td><td>6</td><td>7</td></tr> </table>	L	12.5	15	17.5	20	22.5	25	27.5	A	1	2	3	4	5	6	7	<table border="1"> <tr><td>L</td><td>15</td><td>17.5</td><td>20</td><td>25</td><td>27.5</td><td>30</td></tr> <tr><td>A</td><td>1.5</td><td>2</td><td>3</td><td>4</td><td>5</td><td>6</td></tr> </table>	L	15	17.5	20	25	27.5	30	A	1.5	2	3	4	5	6	<table border="1"> <tr><td>L</td><td>15</td><td>20</td><td>25</td><td>27.5</td></tr> <tr><td>A</td><td>1.5</td><td>2</td><td>3</td><td>4</td></tr> </table>	L	15	20	25	27.5	A	1.5	2	3	4
L	12.5	15	17.5	20	22.5	25	27.5																																			
A	1	2	3	4	5	6	7																																			
L	15	17.5	20	25	27.5	30																																				
A	1.5	2	3	4	5	6																																				
L	15	20	25	27.5																																						
A	1.5	2	3	4																																						

Resistance Taper Options

A Taper	B Taper	C Taper	MN
05 A	1 B	05 C	M
10 A	2 B	10 C	N
15 A	3 B	15 C	
20 A	4 B	20 C	
25 A		25 C	
30 A		30 C	