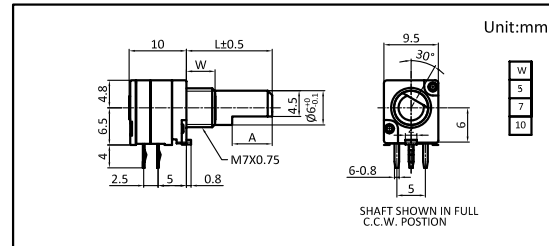
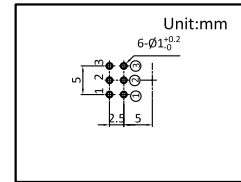


Part number	R09701GOXBV1	
Number of resistor elements	Dual -unit	
Mounting direction	Horizontal	
Shaft type	Optional	
Shaft length	Optional	
Center detent	<input type="checkbox"/> None <input type="checkbox"/> 1CC <input type="checkbox"/> 7CC <input type="checkbox"/> 41CC	
Total resistance	500Ω~1000KΩ	
Resistance taper	Optional	
Operating temperature range	-10℃~+70℃	
Electrical characteristics	Total resistance tolerance	<input type="checkbox"/> ±20% <input type="checkbox"/> 其它
	Rated power	0.05W
	Max. operating voltage	50V AC,10V DC
	Residual resistance	20Ω max
	Sliding noise	less than 100mV
	Gang error	-40~0dB ±3dB
	Insulation resistance	100MΩmin,250V DC
	Voltage proof	300V AC for 1minute
Mechanical characteristics	Total rotational angle	300°±5°
	Rotational torque	2~25mN.m
	Stopper strength	0.5N.m
	Push-pull strength	80N max
	Vibration	10 to 55 to 10Hz/min., amplitude is 1.5mm for all the frequencies, in X, Y and Z directions and for 2 hours respectively
Durability	Operating life	15, 000 cycles
MOQ	1000PCS	

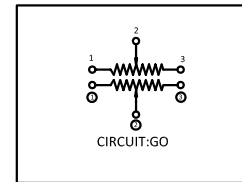
### Dimensions



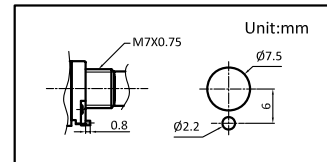
### Mounting Hole Dimensions



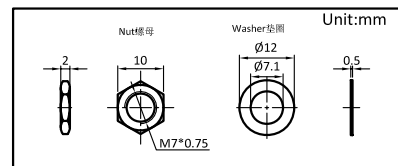
### Circuit Diagram



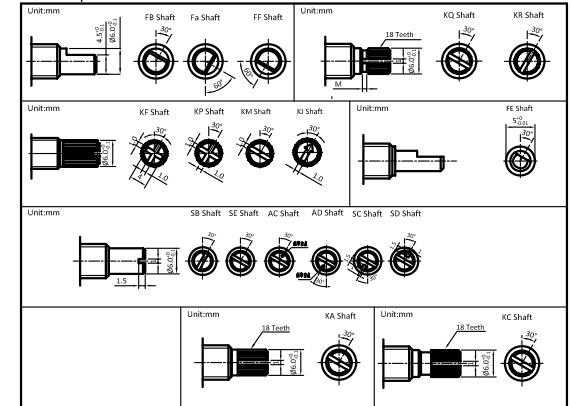
### Control Panel Dimensions



### Screw Dimensions



### Shaft Options



### Shaft Length Options

Unit:mm	W=5	Unit:mm	W=5																												
	<table border="1"> <tr><td>L</td><td>13</td><td>15</td><td>20</td><td>25</td><td>30</td></tr> <tr><td>A</td><td>5</td><td>7</td><td>12</td><td>12</td><td>12</td></tr> </table>	L	13	15	20	25	30	A	5	7	12	12	12		<table border="1"> <tr><td>L</td><td>10</td><td>12</td><td>14</td><td>15</td><td>15</td><td>20</td><td>25</td></tr> <tr><td>A</td><td>5.5</td><td>5</td><td>6.5</td><td>7.5</td><td>6</td><td>12</td><td>12</td></tr> </table>	L	10	12	14	15	15	20	25	A	5.5	5	6.5	7.5	6	12	12
L	13	15	20	25	30																										
A	5	7	12	12	12																										
L	10	12	14	15	15	20	25																								
A	5.5	5	6.5	7.5	6	12	12																								
Unit:mm	W=7	Unit:mm	W=7																												
	<table border="1"> <tr><td>L</td><td>15</td><td>17</td><td>20</td><td>25</td><td>30</td></tr> <tr><td>A</td><td>7</td><td>7</td><td>12</td><td>12</td><td>12</td></tr> </table>	L	15	17	20	25	30	A	7	7	12	12	12		<table border="1"> <tr><td>L</td><td>12</td><td>15</td><td>20</td><td>25</td><td>30</td></tr> <tr><td>A</td><td>5.5</td><td>6</td><td>10</td><td>12</td><td>12</td></tr> </table>	L	12	15	20	25	30	A	5.5	6	10	12	12				
L	15	17	20	25	30																										
A	7	7	12	12	12																										
L	12	15	20	25	30																										
A	5.5	6	10	12	12																										
Unit:mm	W=10	Unit:mm	W=10																												
	<table border="1"> <tr><td>L</td><td>15</td><td>20</td><td>25</td><td>30</td></tr> <tr><td>A</td><td>8.5</td><td>7</td><td>12</td><td>12</td></tr> </table>	L	15	20	25	30	A	8.5	7	12	12		<table border="1"> <tr><td>L</td><td>15</td><td>20</td><td>25</td></tr> <tr><td>A</td><td>8.5</td><td>8</td><td>12</td></tr> </table>	L	15	20	25	A	8.5	8	12										
L	15	20	25	30																											
A	8.5	7	12	12																											
L	15	20	25																												
A	8.5	8	12																												
Unit:mm	W=5	Unit:mm	W=5																												
	<table border="1"> <tr><td>L</td><td>15</td><td>20</td><td>25</td><td>30</td></tr> <tr><td>A</td><td>7</td><td>12</td><td>12</td><td>12</td></tr> </table>	L	15	20	25	30	A	7	12	12	12		<table border="1"> <tr><td>L</td><td>15</td><td>20</td><td>25</td></tr> <tr><td>A</td><td>6</td><td>6</td><td>12</td></tr> </table>	L	15	20	25	A	6	6	12										
L	15	20	25	30																											
A	7	12	12	12																											
L	15	20	25																												
A	6	6	12																												
Unit:mm	W=7	Unit:mm	W=7																												
	<table border="1"> <tr><td>L</td><td>15</td><td>20</td><td>25</td></tr> <tr><td>A</td><td>7</td><td>12</td><td>12</td></tr> </table>	L	15	20	25	A	7	12	12		<table border="1"> <tr><td>L</td><td>15</td><td>20</td></tr> <tr><td>A</td><td>7</td><td>12</td></tr> </table>	L	15	20	A	7	12														
L	15	20	25																												
A	7	12	12																												
L	15	20																													
A	7	12																													
Unit:mm	W=10	Unit:mm	W=10																												
	<table border="1"> <tr><td>L</td><td>20</td><td>25</td><td>30</td></tr> <tr><td>A</td><td>12</td><td>12</td><td>12</td></tr> </table>	L	20	25	30	A	12	12	12		<table border="1"> <tr><td>L</td><td>20</td><td>25</td></tr> <tr><td>A</td><td>8</td><td>8</td></tr> </table>	L	20	25	A	8	8														
L	20	25	30																												
A	12	12	12																												
L	20	25																													
A	8	8																													

### Resistance Taper Options

A Taper	B Taper	C Taper	MN
05 A	1 B	05 C	M
10 A	2 B	10 C	N
15 A	3 B	15 C	
20 A	4 B	20 C	
25 A		25 C	
30 A		30 C	