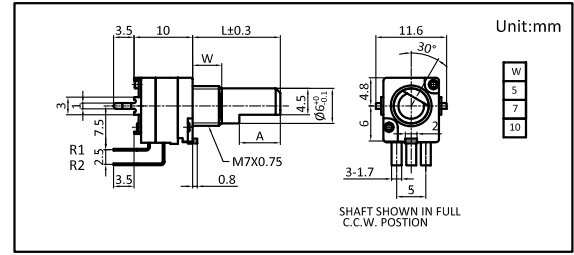
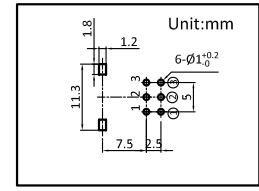


Part number	R09701GOBBH1		
Number of resistor elements	Dual -unit		
Mounting direction	Vertical		
Shaft type	Optional		
Shaft length	Optional		
Center detent	<input type="checkbox"/> None <input type="checkbox"/> 1CC <input type="checkbox"/> 7CC <input type="checkbox"/> 41CC		
Total resistance	500Ω~1000KΩ		
Resistance taper	Optional		
Operating temperature range	-10°C~+70°C		
Electrical characteristics	Total resistance tolerance	<input type="checkbox"/> ±20% <input type="checkbox"/> 其它	
	Rated power	0.05W	
	Max. operating voltage	50V AC,10V DC	
	Residual resistance	20Ω max	
	Sliding noise	less than 100mV	
	Gang error	-40~0dB ±3dB	
	Insulation resistance	100MΩmin,250V DC	
	Voltage proof	300V AC for 1minute	
Mechanical characteristics	Total rotational angle	300°±5°	
	Rotational torque	2~25mN.m	
	Stopper strength	0.5N.m	
	Push-pull strength	80N max	
	Vibration	10 to 55 to 10Hz/min., amplitude is 1.5mm for all the frequencies, in X, Y and Z directions and for 2 hours respectively	
Durability	Operating life	15, 000 cycles	
MOQ	1000PCS		

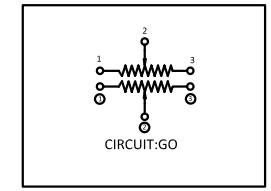
Dimensions



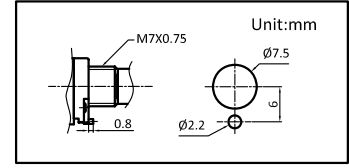
Mounting Hole Dimensions



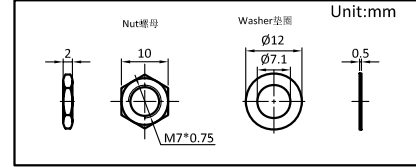
Circuit Diagram



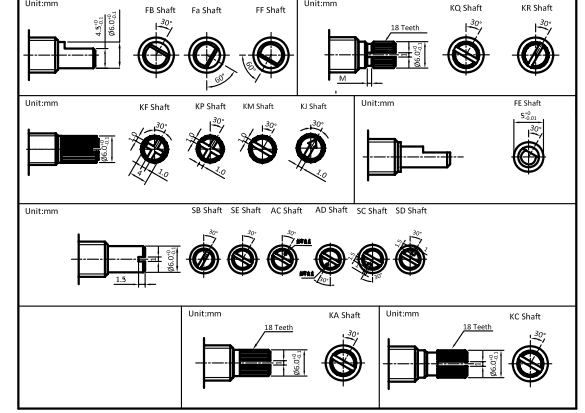
Control Panel Dimensions



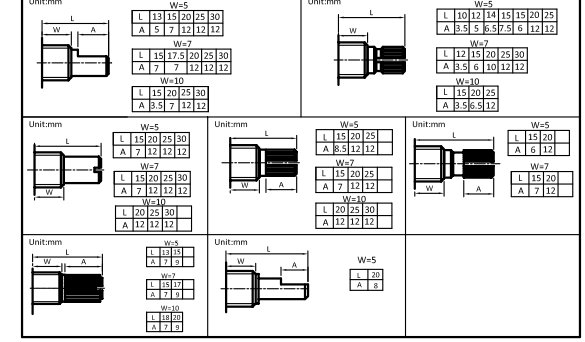
Screw Dimensions



Shaft Options



Shaft Length Options



Resistance Taper Options

A Taper	B Taper	C Taper	MN
05 A	1 B	05 C	M
10 A	2 B	10 C	N
15 A	3 B	15 C	
20 A	4 B	20 C	
25 A		25 C	
30 A		30 C	